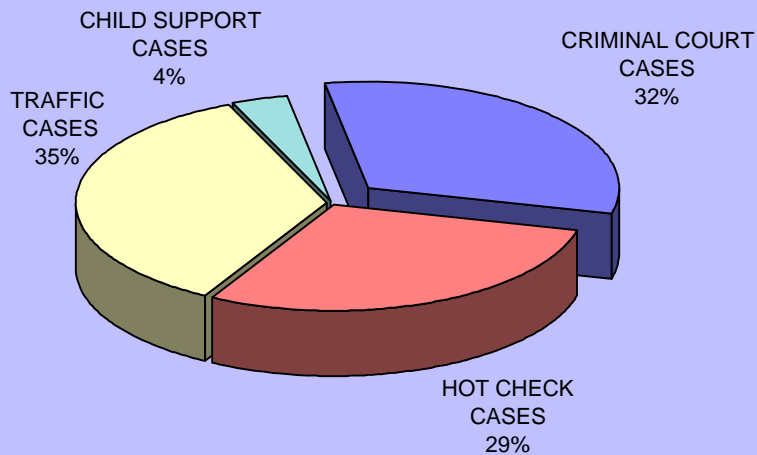


FIRST JUDICIAL DISTRICT DISTRICT ATTORNEY CASES OPENED 2006

CRIMINAL COURT CASES	8,397
HOT CHECK CASES	7,716
TRAFFIC CASES	9,418
CHILD SUPPORT CASES	962
TOTAL CASES	26,493
**TOTAL DOES NOT INCLUDE JUVENILE COURT CASES	

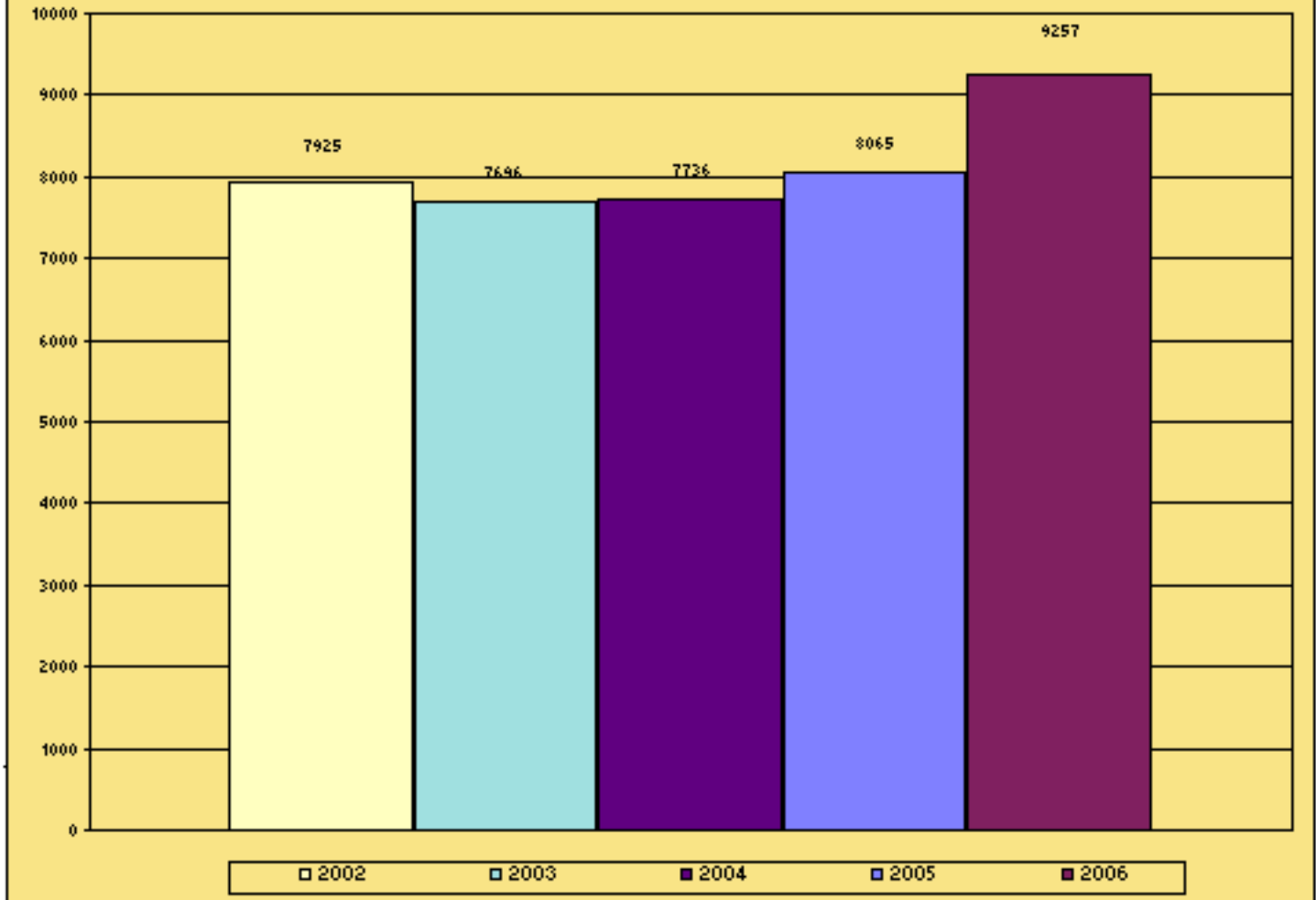
CADDO PARISH DISTRICT ATTORNEY CASELOAD 2006



**FIRST JUDICIAL DISTRICT
DISTRICT ATTORNEY
DISTRICT COURT DEFENDANTS OPENED ANNUALLY**

PERIOD	2002	2003	2004	2005	2006
TOTAL	7,696	7,736	8,065	8,510	9,257
MONTHLY AVERAGE	641	645	672	709	771
% CHANGE OVER LAST YEAR	-2.98%	0.52%	4.08%	5.23%	8.07%

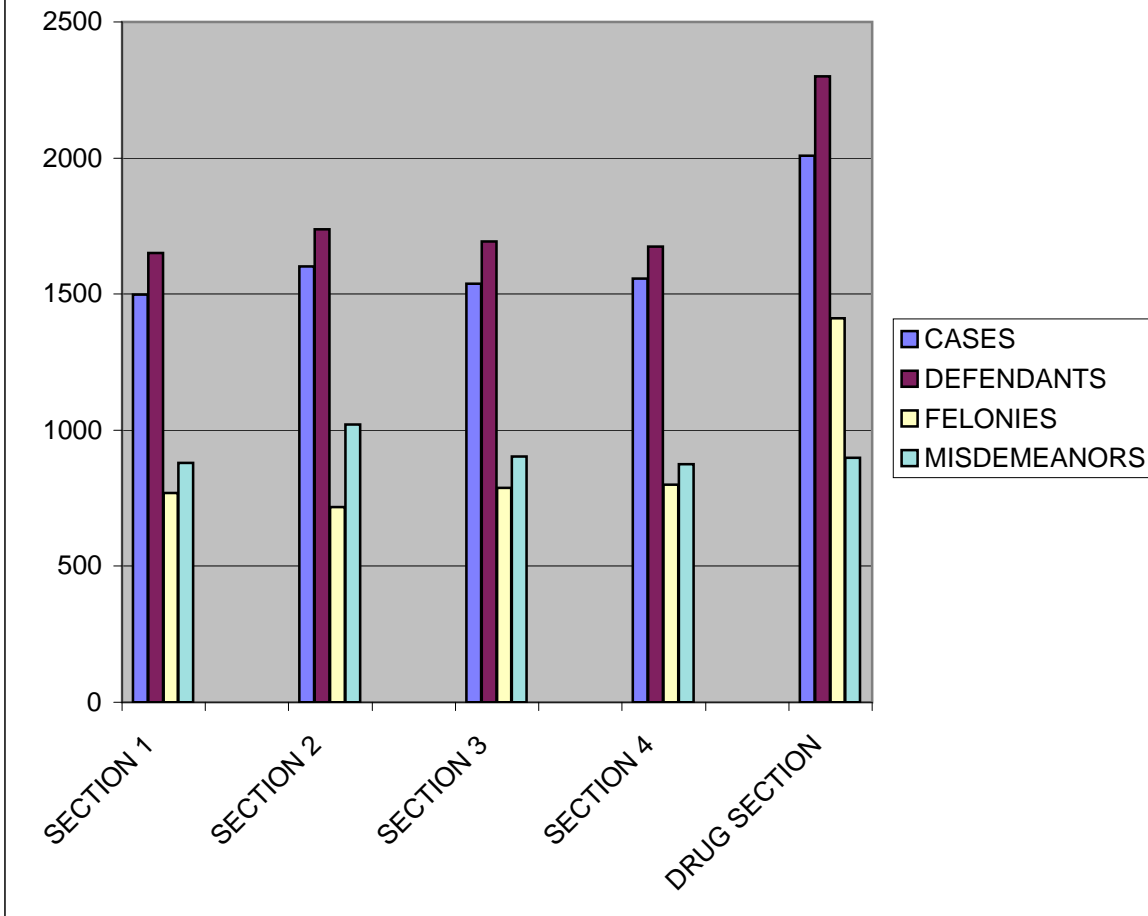
**CADDO DISTRICT ATTORNEY
CRIMINAL DEFENDANTS OPENED ANNUALLY**



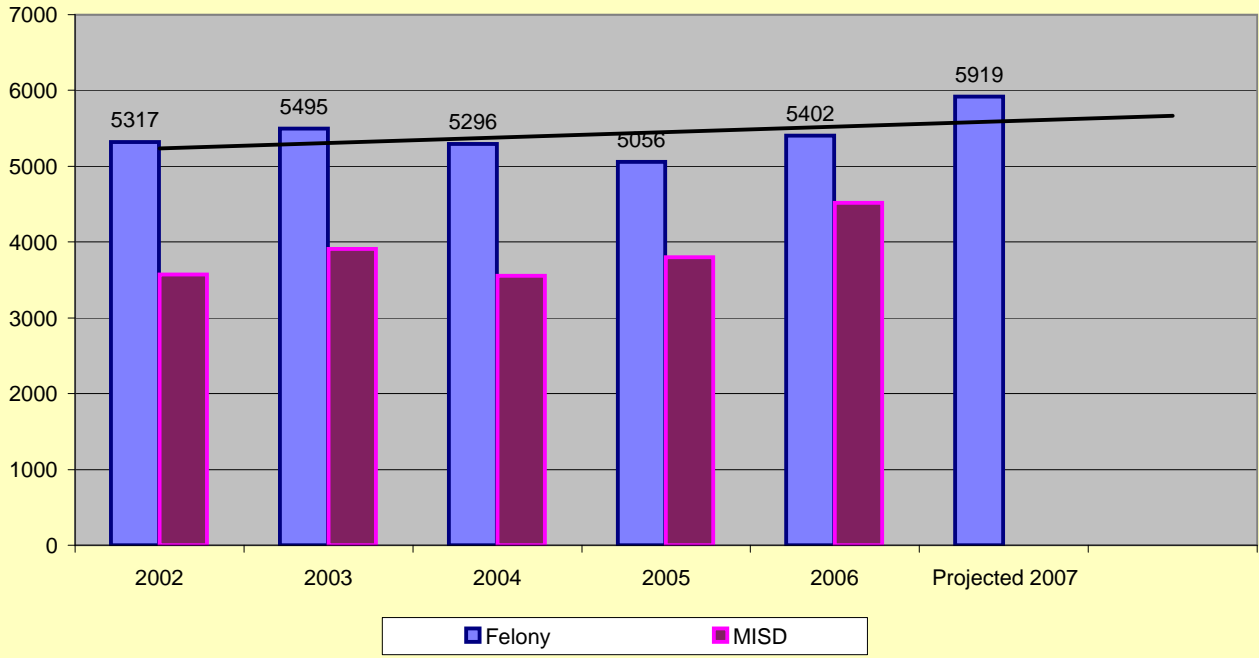
**CRIMINAL COURT CASES
OPENED BY SECTION
YEAR - 2006**

	CASES	DEFENDANTS	FELONIES	MISD.
SECTION 1	1497	1650	770	880
SECTION 2	1602	1739	718	1021
SECTION 3	1538	1693	789	904
SECTION 4	1556	1674	799	875
DRUG SECTION	2008	2300	1411	899
WARRANTS	191	196	186	10
TOTAL OPENED	8392	9252	4673	4589

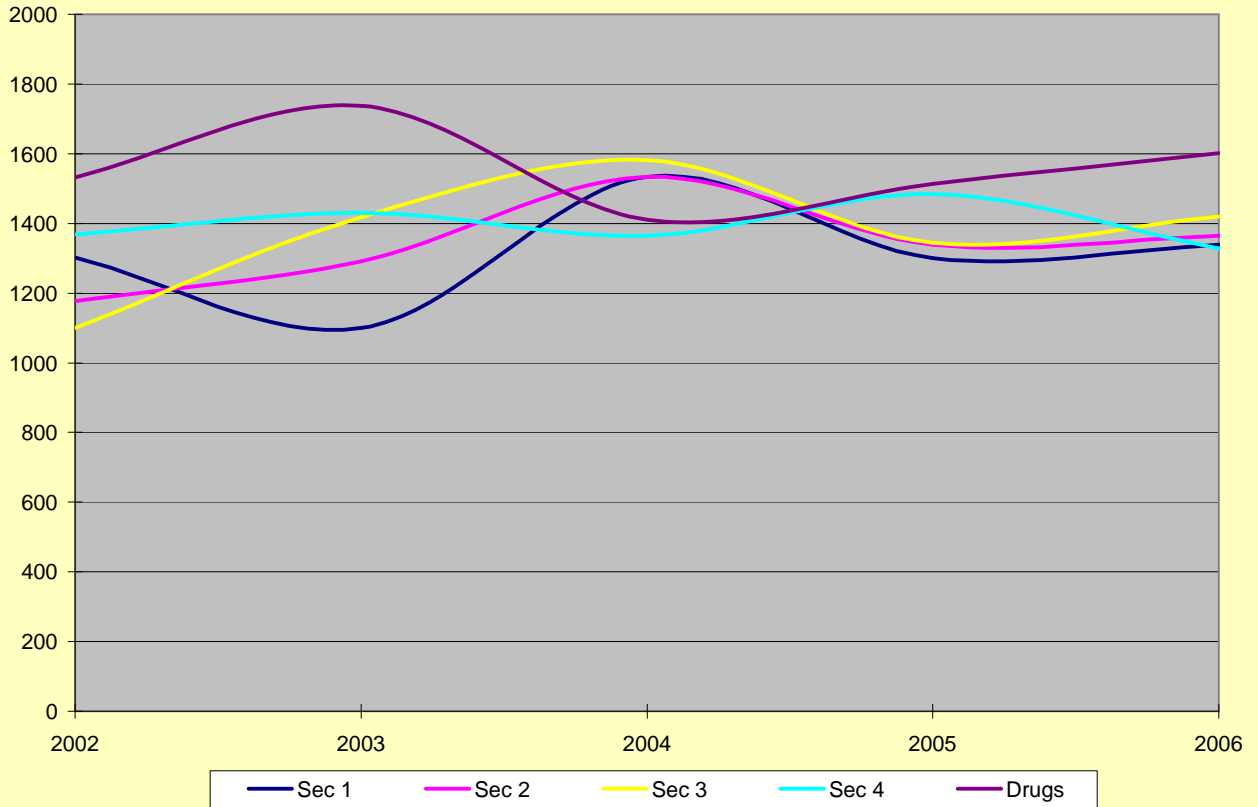
**CADDO DISTRICT ATTORNEY
NEW CRIMINAL COURT CASES IN 2006**



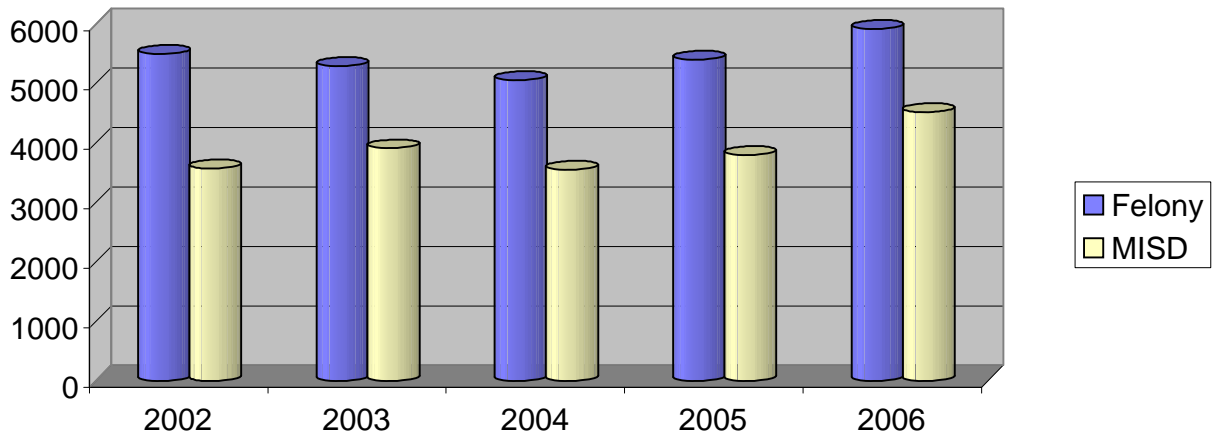
ACTIVE CRIMINAL COURT CASES - 5 YEAR ANALYSIS



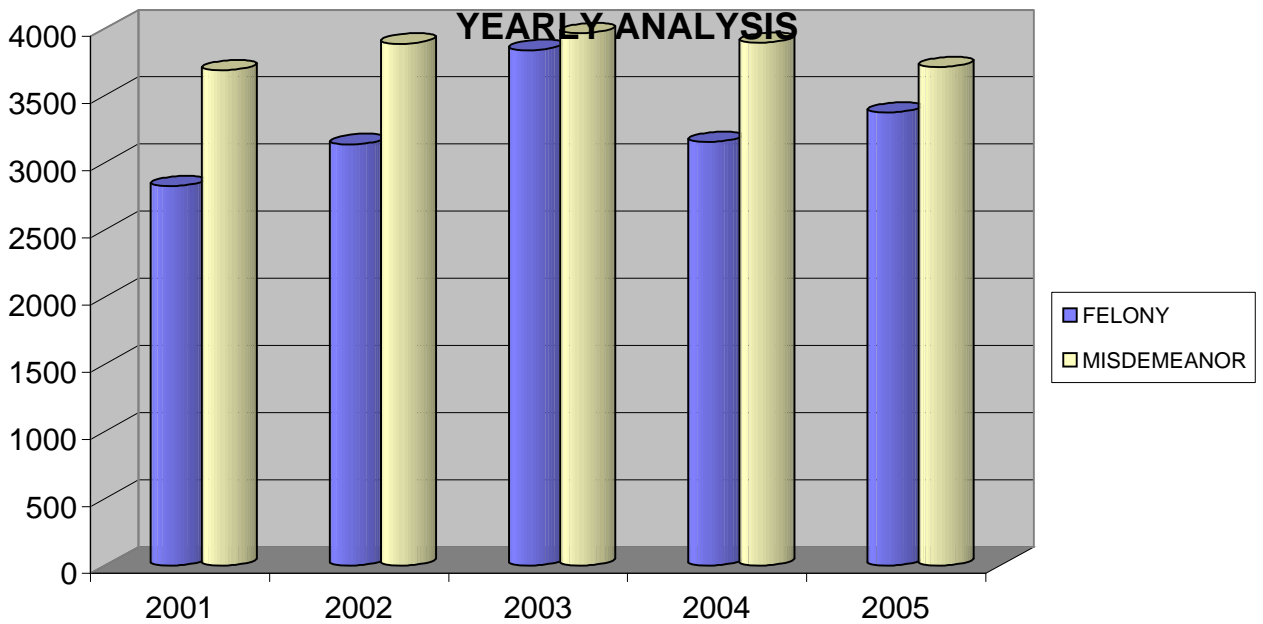
CLOSED CRIMINAL COURT CASES - 5 YEAR ANALYSIS



TOTAL ACTIVE CASES CRIMINAL COURT YEARLY ANALYSIS

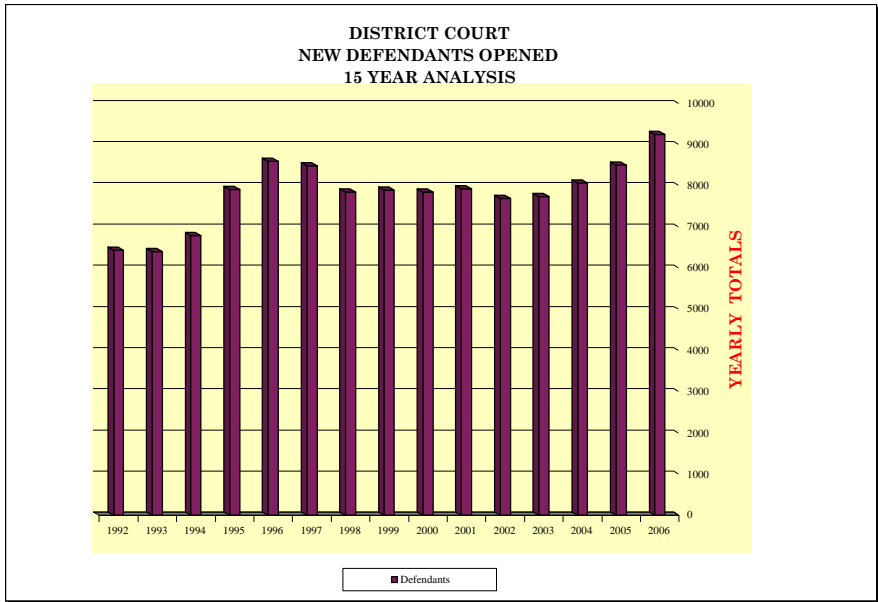
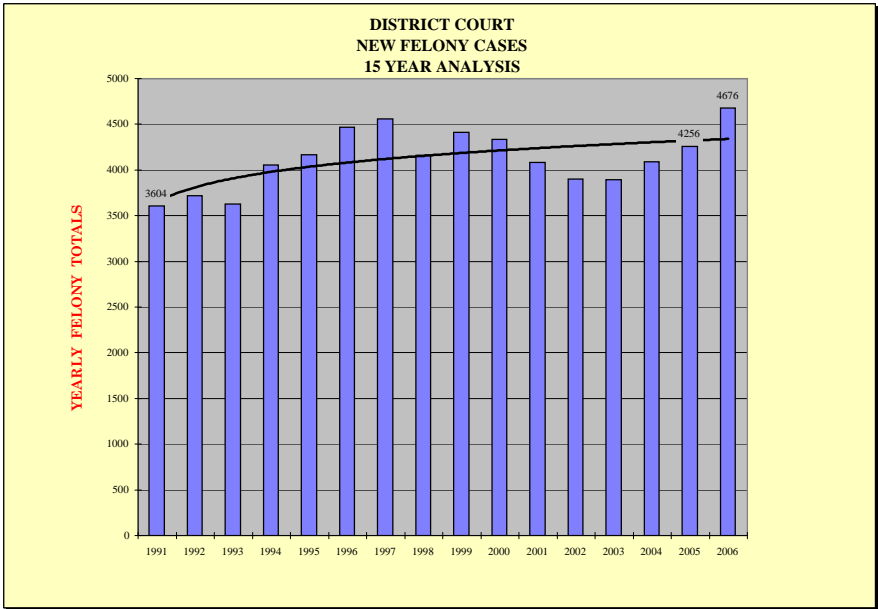
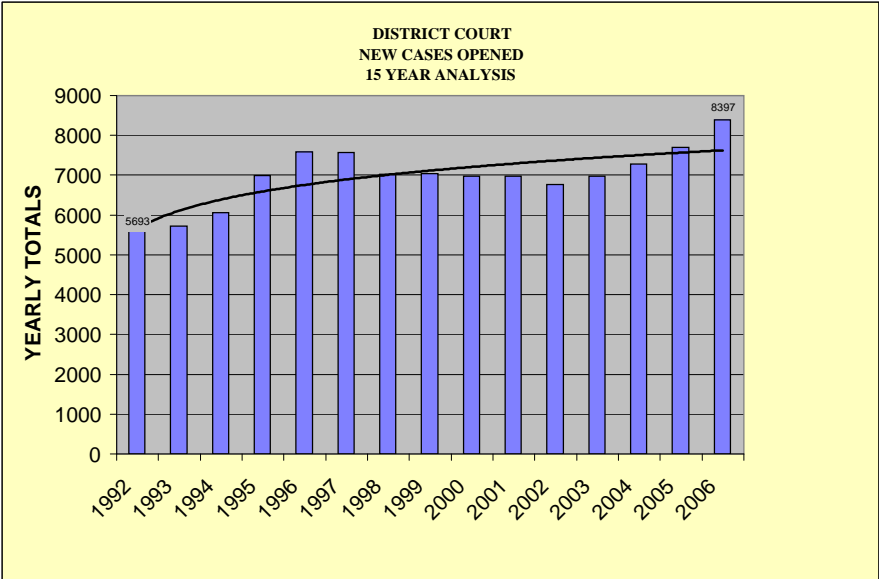


TOTAL CLOSED CASES CRIMINAL COURT YEARLY ANALYSIS



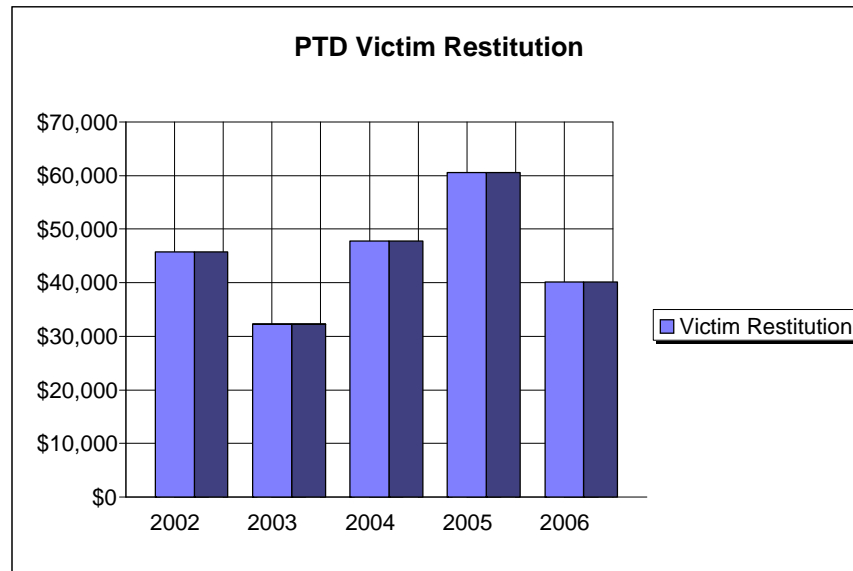
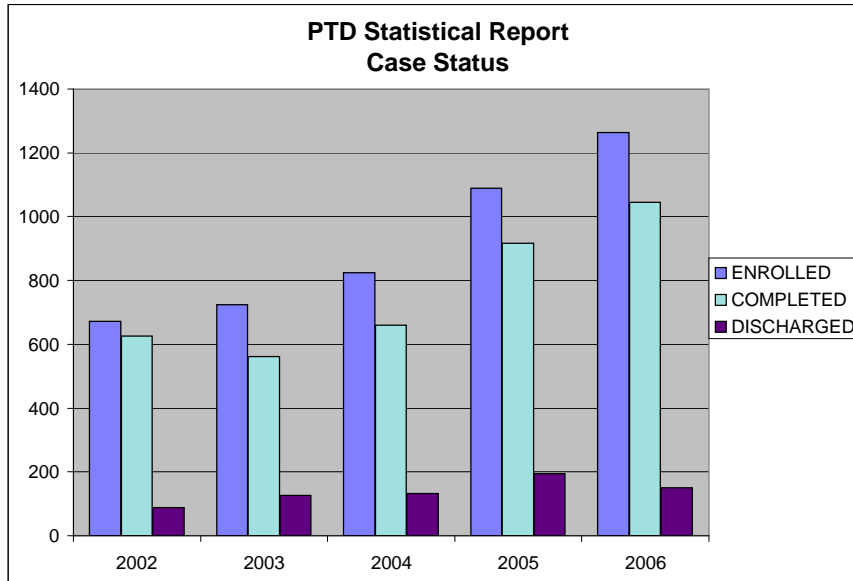
**FIRST JUDICIAL DISTRICT
DISTRICT ATTORNEY
DISTRICT COURT CASE LOAD
2006**

PERIOD	CASES	DEFENDANTS	FELONIES	MISDEMEANORS
JAN	664	751	354	397
FEB	664	730	318	412
MAR	879	953	454	499
APR	685	789	376	413
MAY	724	795	368	427
JUN	717	797	403	394
JUL	704	771	423	348
AUG	765	839	471	368
SEP	704	766	405	361
OCT	734	786	425	361
NOV	557	619	314	305
DEC	600	661	365	296
TOTAL 2006	8,397	9,257	4,676	4,581
AVERAGE	699.8	771.4	389.7	381.8



**CADDO PARISH DISTRICT ATTORNEY
PRE-TRIAL DIVERSION PROGRAM
2006**

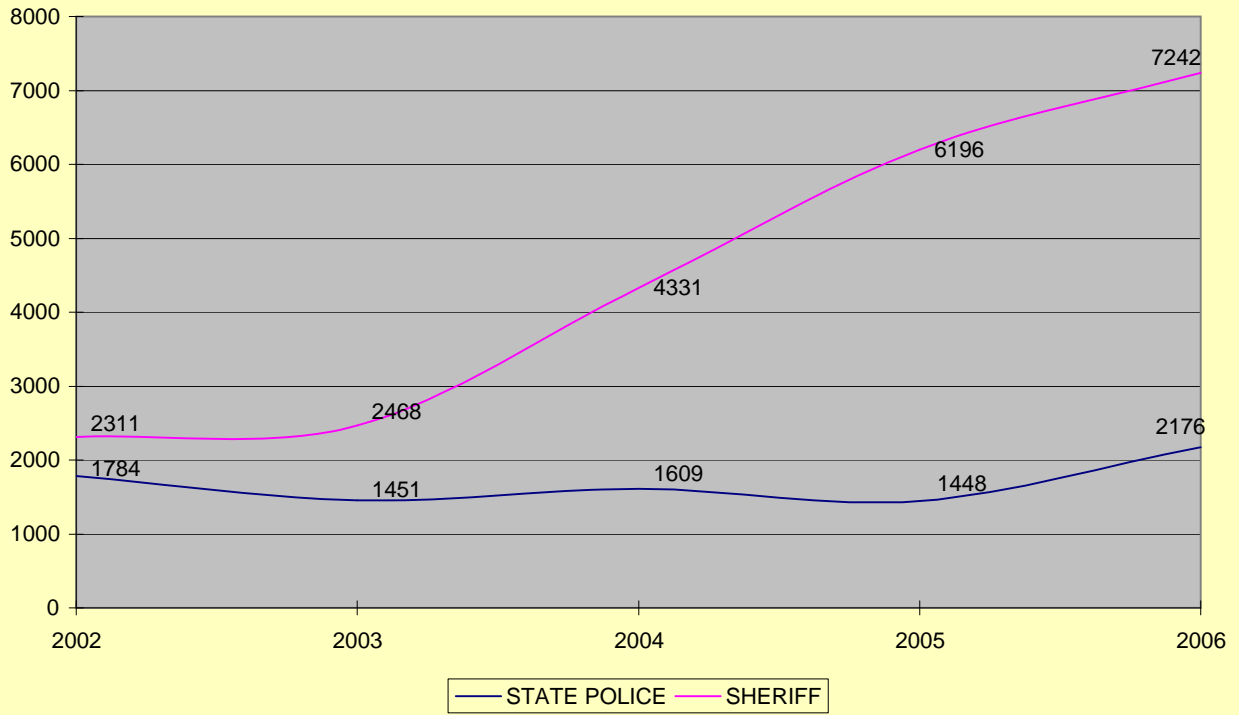
	TOTAL CASES	CRIMINAL CASES	TRAFFIC CASES
TRANSFERRED	1633	483	1150
ENROLLED	1263	326	937
ACTIVE (TOTAL FOR YEAR)	1827	628	1199
SUCCESSFULLY COMPLETED	1044		
DISCHARGED UNSUCCESSFULLY	151		
Victim Restitution Since 1997			
VICTIM RESTITUTION DISBURSED	\$40,151	\$528,818	
COMMUNITY SERVICE HOURS WORKED	6,315		
DA ENROLLMENT FEE	\$115,365		



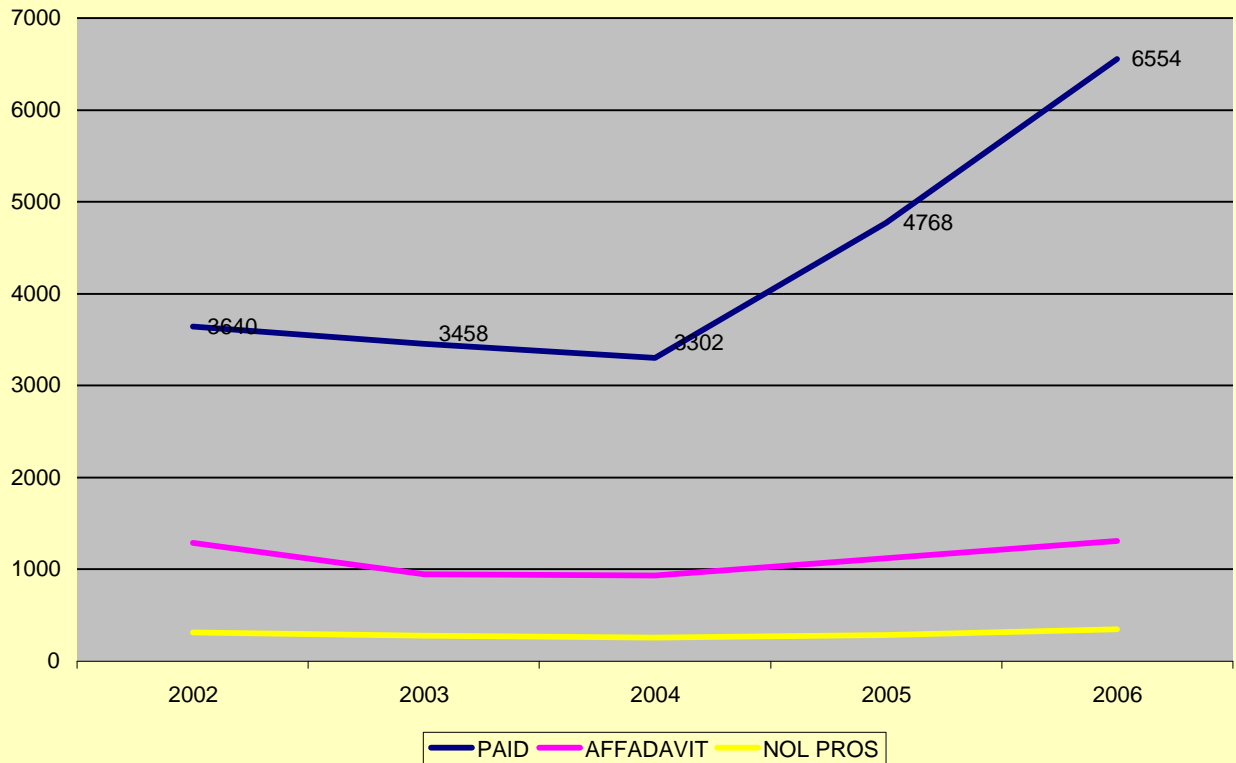
**FIRST JUDICIAL DISTRICT
DISTRICT ATTORNEY
2006 TRAFFIC CASES**

PERIOD	STATE POLICE	SHERIFF DEPT .	MONTH TOTAL	PAID	AFFA- DAVIT	NOL PROS
<i>JAN</i>	178	700	878	564	190	51
<i>FEB</i>	171	663	834	612	210	11
<i>MAR</i>	216	778	994	580	0	27
<i>APR</i>	196	611	807	616	0	23
<i>MAY</i>	290	687	977	549	0	22
<i>JUN</i>	204	586	790	609	359	21
<i>JUL</i>	215	475	690	581	0	63
<i>AUG</i>	158	1023	1181	448	128	36
<i>SEP</i>	200	516	716	661	421	34
<i>OCT</i>	53	379	432	581	0	34
<i>NOV</i>	165	331	496	470	0	13
<i>DEC</i>	130	492	622	283	0	11
TOTAL	2176	7241	9417	6554	1308	346
2006 AVERAGE	181	603	785	546	109	29

TRAFFIC CASES OPENED BY YEAR



TRAFFIC DISPOSITIONS

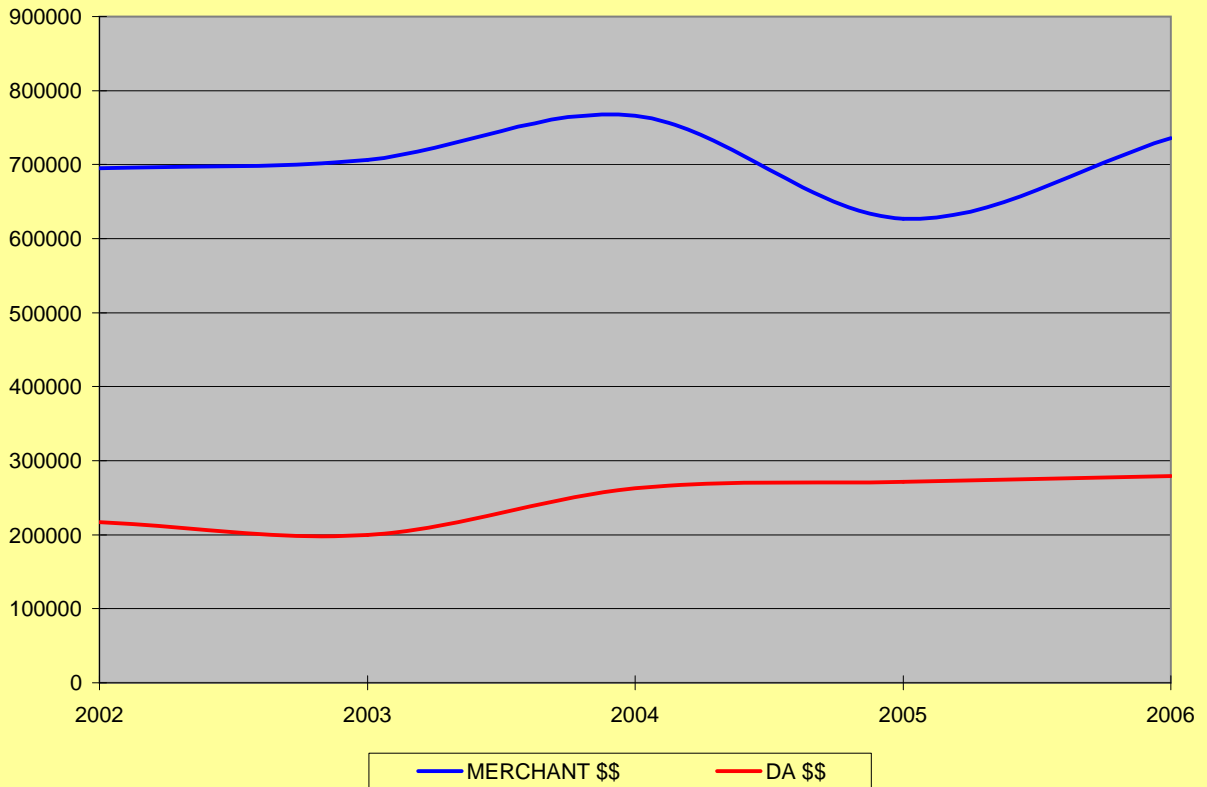


**FIRST JUDICIAL DISTRICT
DISTRICT ATTORNEY
HOT CHECK REPORT - FIVE YEAR ANALYSIS**

PERIOD	CASES OPENED	CASES CLOSED	# CHECKS COLLECTED	# CHECKS RETURNED	MERCHANT COLLECTED	FEES COLLECTED
2006	7,716	9,667	7,121	2,546	736,033	279,143
2005	9,192	9,881	7,258	2,623	626,826	271,567
2004	8,703	14,460	7,665	7,077	765,867	262,966
2003	6,423	10,920	7,162	3,982	706,635	199,517
2002	9,871	10,830	8,841	2,265	695,181	216,987
5 YR.TOTAL	41,905	55,758	38,047	18,493	3,530,542	1,230,180

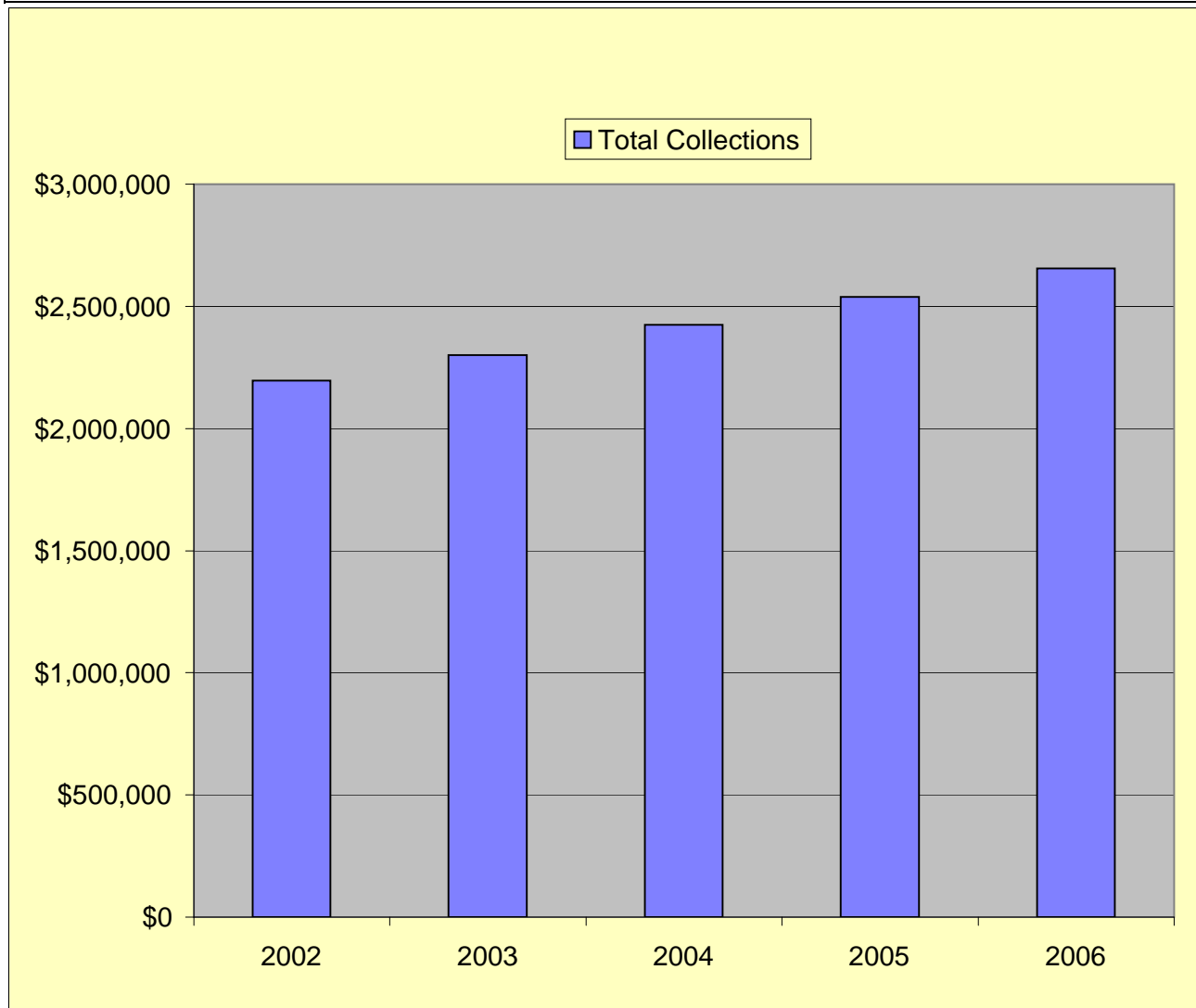
TOTAL COLLECTIONS						
1983-2005	219,810	219,696	175,519	53,994	\$12,983,730	\$4,672,186

5 YEAR COLLECTIONS HISTORY



DISTRICT ATTORNEY FIRST JUDICIAL DISTRICT CHILD SUPPORT

APPOINTMENTS SCHEDULED	APPOINTMENTS SEEN	NEW CASES FILED	TOTAL ARREARS COLLECTED
3877	1637	2,522	\$2,654,676
TOTAL COLLECTIONS 1982 - 2006		\$71,781,658	
% OF APPOINTMENTS SEEN =		42.22%	



**FIRST JUDICIAL DISTRICT
DISTRICT ATTORNEY
APPEALS DIVISION - 2006**

	2005	2006
Briefs Filed :		
2nd Circuit Court of Appeal	56	57
1st Judicial District Court (Post Conviction Relief Responses)	92	75
Louisiana Supreme Court	4	9
U.S. District Court	8	20
U.S. 5th Circuit Court of Appeal	<u>1</u>	<u>0</u>
Total	161	161